



MIRAE Management Ins Co., Ltd.

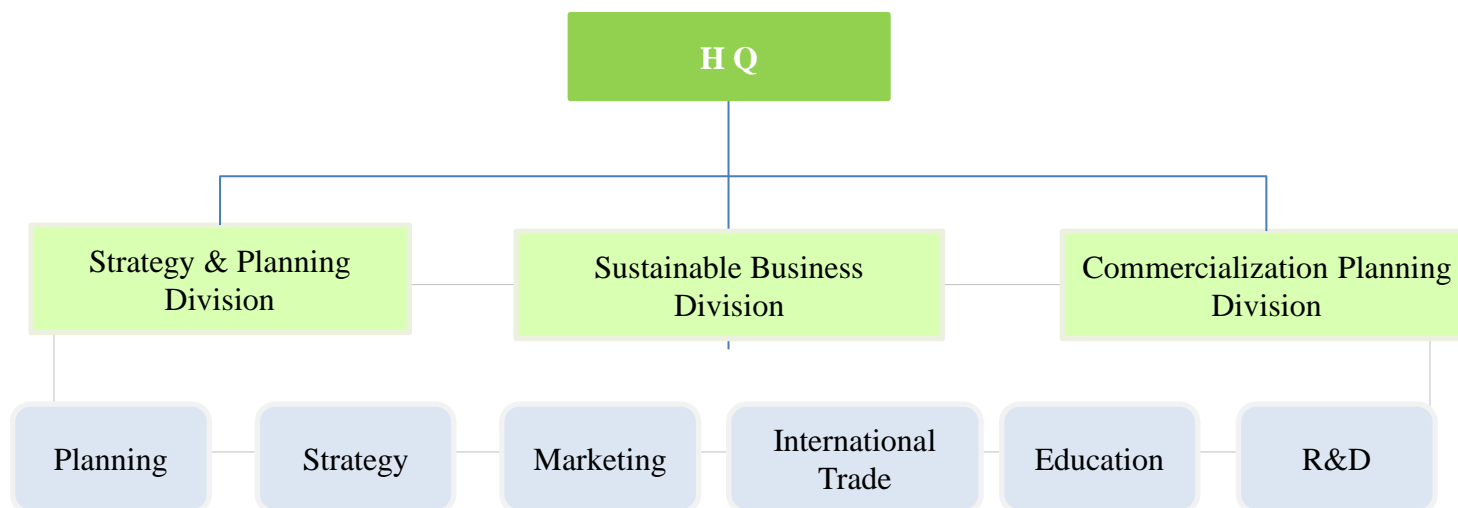
Copyright © 2007 by MIRAE Management Ins Co., Ltd. ALL RIGHTS RESERVED.

No part of this publication may be reproduced. Stored in a retrieval system, or transmitted in any form or by any means – Electronic, mechanical, photocopying, recording, or otherwise – without the permission of MIRAE Management Ins Co., Ltd. This document provides an outline of a presentation and is incomplete without the accompanying oral commentary and discussion.

Goal Oriented, Performance Based, Practicable Consulting.™

1. Company Status

Corporate name	MIRAE management Ins	CEO	CHOO soon-jin
Consulting Area	<ul style="list-style-type: none"> - International Market Research - International Trade and Business - Marketing Plan and Strategy - Production Management 	Number of Employees	6
Address	2F, 80-7, Wonhyo-ro 28-gil, Gyeongsan-si, Gyeongsangbuk-do, Republic of Korea		
Tel	TEL : 053-801-3312, FAX : 053-812-3316		
Homepage	www.seemirae.kr		
E-mail	seemirae21@naver.com		
The date of Establishment	2007. 3. 16	Stock	1 Million



2. Management Policy

Mission

Business Commercialization and Overseas Expansion Strategy Consulting, Mutual Growth with Clients

Vision

- Supporting Successful Overseas Expansion for Companies
- Consulting on Online and Offline Marketing and Performance Goal Management
- Consulting on New Product Planning and Business Commercialization Strategy Development

Planning

- Strengthening Networks to Identify Excellent Partner Companies
- Developing Marketing Strategies and Implementation Tools
- Effective Use of Online and Offline Media for Promotional Marketing
- Providing Customized Business Consulting Methods to Enhance Customer Satisfaction

3. Core competency



Domestic clients

700



Related government organizations

25



Consultant career years

18

Total Consulting Revenue by sector



2024.12.30

① Global Network Status	③ Consulting Satisfaction and Evaluation by Government Organizations
<ul style="list-style-type: none"> Thailand, Vietnam, China, Japan, India, USA etc. : branch office 	<ul style="list-style-type: none"> 2024(year) : Korea Social Enterprise Promotion Agency Evaluation A / Highest score A 2017(year)~ Present : Satisfaction over 9 point / Perfect score is 10 point 2014(year)~ Present : Korea agro-fisheries & food trade corporation(AT) Evaluation A / Highest score A 2010(year)~ Present : Korea Environmental Industry and Technology Institute(KEITI) Evaluation A / Highest score A 2006(year)~ Present : Ministry of SMEs and Startup's Certificated Consulting Institute
② Specific business consulting area	④ The Government Citation
<ul style="list-style-type: none"> Global Marketing research consulting Research and Development Planning/ differentiation / distribution channels(DCA) / STP Marketing etc., International Trade and business Personnel Organization & management 	<ul style="list-style-type: none"> Administrator Citation once Korea Technology & Information Promotion Agency for SMEs Citation Twice (the whole country)

4. Best Cases

